

Fig no. V-105S Full Bore
1/4" ~ 4" DN 8- DN 100



Features :

- Investment Casting
- Blow out proof stem, In-line Maintenance
- For Chemical, Industrial Application
- Carbon Steel or Super Alloy upon request

Standard Compliance :

- Body wall thickness : EN 12516-1/2/3
- Socket Weld : B16.11
- Face to Face : MD's standard
- Body material : EN1503-1
- Pressure testing : EN 12266

Specification :

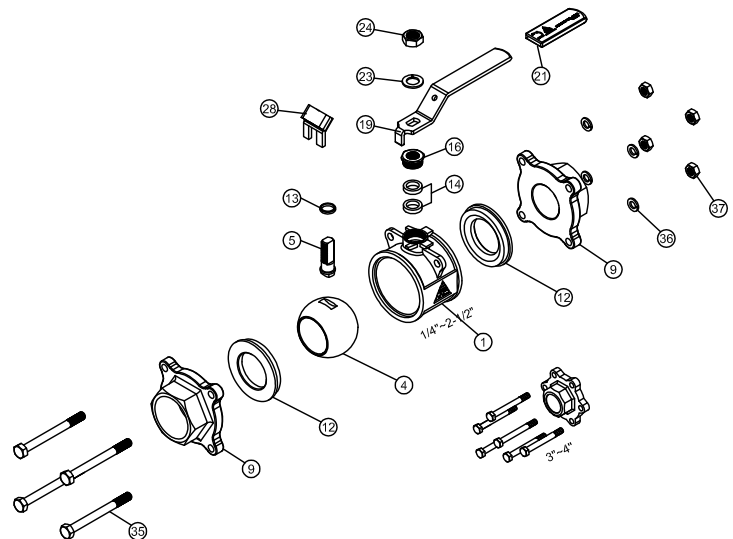
- End connection : Socket Weld end
- Working Pressure : 63 bar (CWP) for DN8-50 / 1000 PSI
 40 bar (CWP) for DN65-100 / 800 PSI
- Temperature : -20 to 180°C

Option :

- Locking Device Handle
- F to F length : DIN 3202 M3

MATERIALS LIST

NO.	PART NAME	MATERIAL
1	BODY	ASTM A351 Gr.CF8M
4	BALL	ASTM A351 Gr.CF8M
5	STEM	SS316
9	END CAP	ASTM A351 Gr.CF8M
12	SEAT	PTFE.
13	THRUST WASHER	PTFE.
14	STEM PACKING	PTFE.
16	GLAND NUT	SS304
19	HANDLE	SS304
21	HANDLE COVER	PLASTIC
23	HANDLE WASHER	SS304
24	HANDLE NUT	SS304
28	LOCKING DEVICE	SS304 (OPTION)
35	BODY BOLT	SS304
36	BOLT WASHER	SS304
37	BOLT NUT	SS304



DIMENSIONS

V-105S	SIZE	BORE	L	E	H	SW	L1
mm	DN8	11.50	54.00	97.40	49.00	14.20	10.00
	DN10	12.50	54.00	97.40	49.00	17.50	10.00
	DN15	15.00	63.50	122.90	56.50	21.80	10.00
	DN20	20.00	72.50	122.90	61.00	27.40	13.00
	DN25	25.00	81.00	144.90	69.00	34.10	13.00
	DN32	32.00	94.50	144.90	73.00	42.70	13.00
	DN40	38.00	108.00	188.90	84.50	49.00	13.00
	DN50	50.00	121.50	188.90	91.50	61.00	16.00
	DN65	65.00	157.50	255.30	115.00	77.00	16.00
inch	DN8	0.45	2.13	3.83	1.93	0.56	0.39
	DN10	0.49	2.13	3.83	1.93	0.69	0.39
	DN15	0.59	2.50	4.84	2.22	0.86	0.39
	DN20	0.79	2.85	4.84	2.40	1.08	0.51
	DN25	0.98	3.19	5.70	2.72	1.34	0.51
	DN32	1.26	3.72	5.70	2.87	1.68	0.51
	DN40	1.50	4.25	7.44	3.33	1.93	0.51
	DN50	1.97	4.78	7.44	3.60	2.40	0.63
	DN65	2.56	6.20	10.05	4.53	3.03	0.63
DN80	3.15	7.40	10.27	5.49	3.55	0.63	

